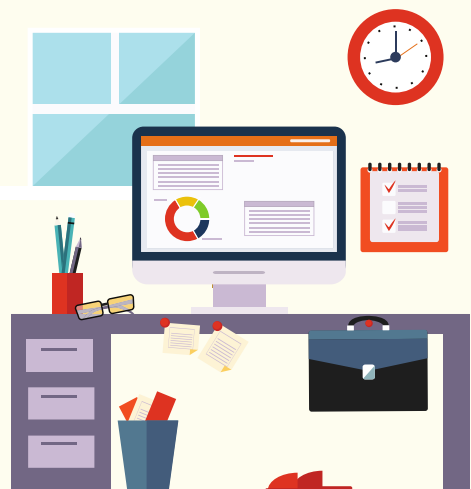


COVID-19 STUDENT SURVEY

TIMELINE



MARCH 4TH

Survey links available for distribution to school administrators



MARCH 8TH - MARCH 26

Survey Administration



FEBRUARY 25

Registration Begins, Preparation for Administration

- School representatives complete registration process
- Schools inform and share information sheets with parents and students

 <https://www> 

MARCH 8TH

Survey links go live

- Survey links are now live for school staff to administer to students for taking the voluntary and anonymous COVID-19 Student Survey
- Schools decide when to survey students during that three week period

TAKE SURVEY

LATE SPRING / EARLY SUMMER

Initial school reports made available

- Several brief fact sheets will be made available to principals to help inform schools in their planning for summer and fall.
- A larger report will be available later in the summer

QUESTIONS: CONTACT@CSSWASHINGTON.ORG OR
EMILY.MAUGHAN@K12.WA.US; 360-725-6030